

**EQUIPMENT & SERVICES  
INTERNATIONAL, LLC**

5810 Post Rd.

East Greenwich, RI 02818

TEL +1-401-884-2893 - FAX: +1-401-884-1260

WWW.ESILLC.CC

E-MAIL: SALES@ESILLC.CC / ENGINEERING@ESILLC.CC



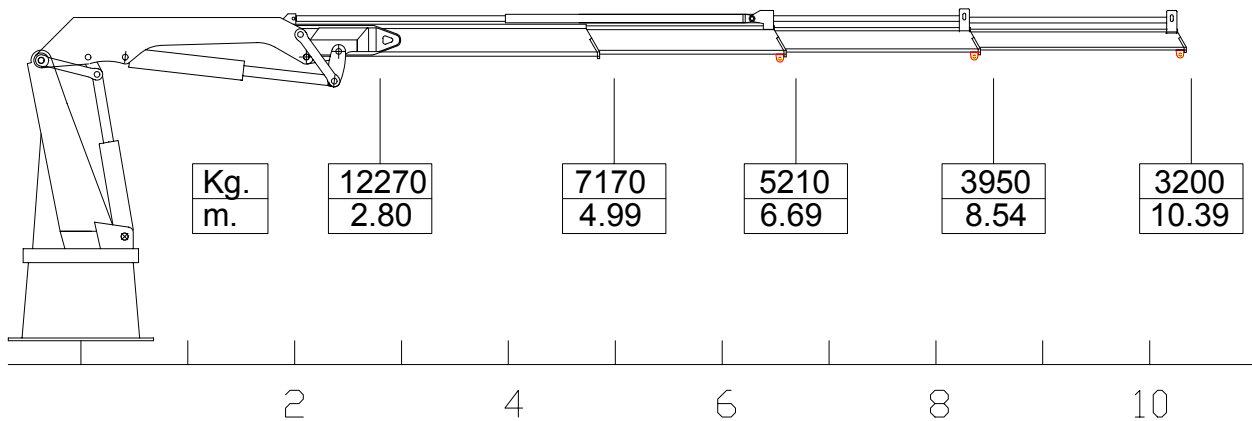
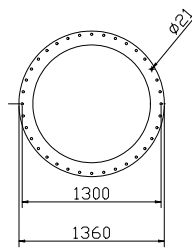
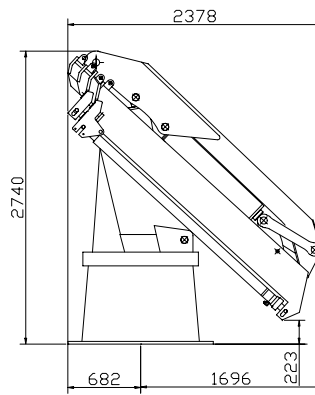
**T – 40500/3S**

**LOADING DIAGRAM & DIMENSIONS**

DIMENSIONS IN MILIMITERS (1 in = 25.4 mm)

(1 KG = 2.204 LBS)

(1 M = 3.28 FEET)



**EQUIPMENT & SERVICES  
INTERNATIONAL, LLC**

5810 Post Rd.

East Greenwich, RI 02818

TEL +1-401-884-2893 - FAX: +1-401-884-1260

WWW.ESILLC.CC

E-MAIL: SALES@ESILLC.CC / ENGINEERING@ESILLC.CC



TECHNICAL DATA T-40500/3S				
	METRIC - IS		IMPERIAL - USA	
	H2B3	H1B3	H2B3	H1B3
MAXIMUM LIFTING MOMENT	txm 30.6	txm 38.2	LbsFt 221211	LbsFt 276152
MAXIMUM HORIZONTAL REACH	m 10.39		Ft in 34' 1"	
SLEWING ANGLE	400°			
SLEWING SPEED – DEG. PER SECOND.	° / s 4			
MAXIMUM WORKING HEEL	4° (7%)			
HYDRAULIC WORKING PRESSURE	bar 250	bar 285	psi 3625	psi 4130
HYDRAULIC FLOW	dm <sup>3</sup> /min 50		Gal/min 13.2	
RECOMMENDED CAPACITY HYDRAULIC RESERVOIR	dm <sup>3</sup> 150		Gal 40	
NET WEIGHT	kg 4300		Lbs 9480	

**STANDARD FEATURES:**

- Load limiting devices.
- Column mounted operator's seat.
- "Power linkage" system at boom articulations.
- Slewing system on shear ball bearing rotation base.
- Hexagonal section extensions for added strength.
- Flanged valves
- Assembly kit (main valve, hose)
- Near white sandblasting and three (3) coat marine paint system.
- Unit design in accordance with: DIN 15018/H1B3 (H2B3 for M)
- ESI Power System (AVPS)

**OPTIONAL ACCESSORIES**

- Hydraulic winch
- Remote Controls
- Manual extensions
- Additional control stages in hydraulic manifold to control additional accessories